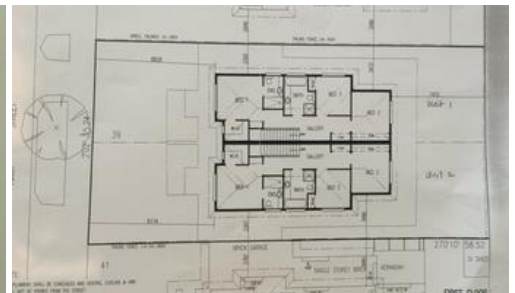




**39 First Street, Clayton South**



## APPROVED PLANS FOR 4 LUXURY TOWNHOUSES ON TWO STREET FRONTAGE

An impressive example of careful planning to optimize the use of the land. Designed with own driveway, two units facing First Street and two facing Kombi road. Conveniently located with close proximity to everything - local shops and station. Be quick to secure this Blue Chip Location. Existing older style 3 bedroom home currently tenanted to 01/08/2015.

The above information provided has been furnished to us by the vendor/s. We have not verified whether or not that information is accurate and do not have any belief in one way or the other in its accuracy. We do not accept any responsibility to any person for its accuracy and do no more than pass it on. All interested parties should make and rely upon their own inquiries in order to determine whether or not this information is in fact accurate.

 3  1

**Price**  
**Property Type**  
**Property ID**

SOLD  
residential  
359

### Agent Details

Thomas Lee - 0432 000 118

### Office Details

Ashburton  
198 High St Ashburton VIC 3147  
Australia  
03 9885 3887

